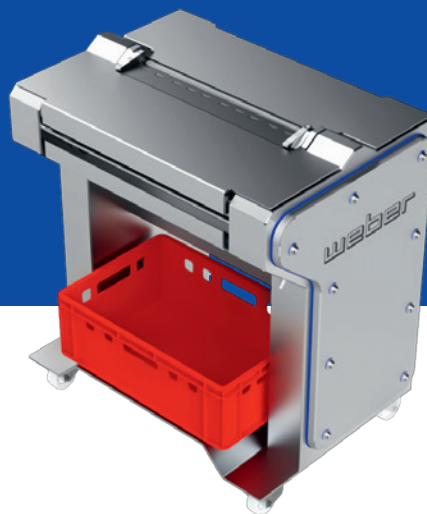


# Skinner AMS 533 TWIN



## Combination machine for thick and thin.

The skinning machine AMS 533 TWIN is ideal for processing cuts with strong sinews and trim, such as pork loins, beef, veal or pork silverside and topside and rump roast.



**weber**



## Powerful

- › Powerful at highest yields and with a compact footprint
- › Optional product-specific transport rollers with blades that are optimally adjusted to them provide the highest possible yields
- › Ideal cutting width for powerful skinning of large and small pieces



## Safe

- › Blade protection in cleaning position
- › Geared brake motor with quick stop



## Efficient

- › Highest yields
- › Cleaning of tension rollers with nozzle-block compressed air, enables consistent skinning results
- › Smartlock – blade holder with quick-release lock

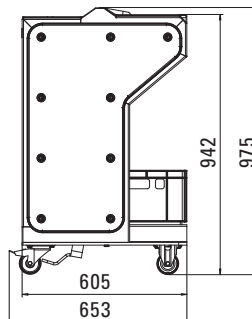
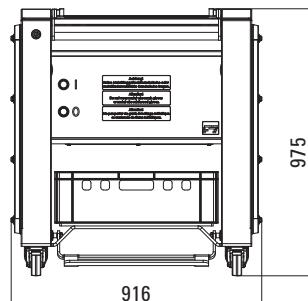
### Technical data

### AMS 533 TWIN

Motor output (kW):	0.75
Cutting width (mm):	533
Net weight (kg):	230
Power connection (V/Hz/A):	400/50/16
Compressed air (bar):	6

### Options:

- › Special voltages
- › Screwed-on blade holder



# weber

### Weber Maschinenbau GmbH Breidenbach

Günther-Weber-Straße 3 · 35236 Breidenbach · Germany  
Fon: +49 6465 918-0 · Fax: +49 6465 918-1100

### Weber Maschinenbau GmbH Neubrandenburg

Feldmark 11 · 17034 Neubrandenburg · Germany  
Fon: +49 395 4506-0 · Fax: +49 395 4506-1110

info@weberweb.com · www.weberweb.com