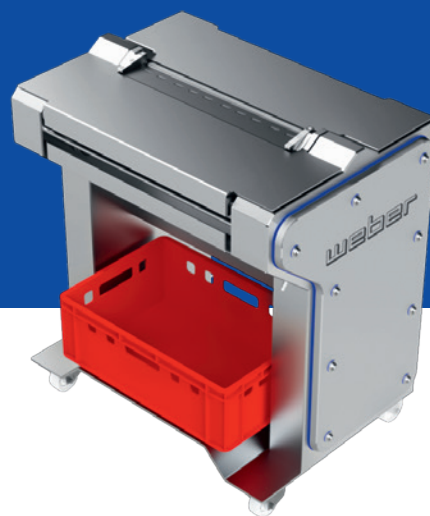


Skinner AMS 533



One for many purposes.

Powerful skinning machine for large and small cuts of beef, veal, pork, turkey, horse and game. Skinner AMS 533 provides ideal cutting widths, even for processing large cuts such as beef topside.



weber



Powerful

- › Powerful at highest yields and with a compact footprint
- › Optional product-specific transport rollers with blades that are optimally adjusted to them provide the highest possible yields
- › Ideal cutting width for powerful skinning of large and small pieces



Safe

- › Blade protection in cleaning position
- › Geared brake motor with quick stop



Efficient

- › Highest yields
- › Product-specific tension rollers
- › Cleaning of tension rollers with nozzle-block compressed air enables consistent skinning results
- › Smartlock – blade holder with quick-release lock

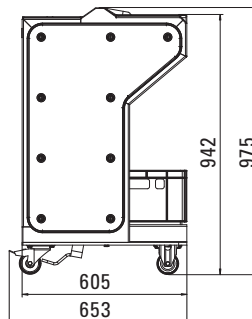
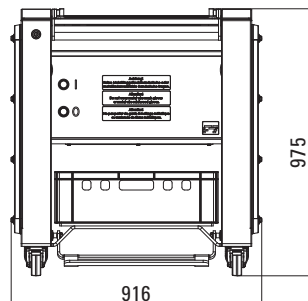
Technical data

AMS 533

Motor output (kW):	0.75
Cutting width (mm):	533
Net weight (kg):	230
Power connection (V/Hz/A):	400/50/16
Compressed air (bar):	6

Options:

- › Special tension rollers
- › Special voltages
- › Screwed-on blade holder



weber

Weber Maschinenbau GmbH Breidenbach
Günther-Weber-Straße 3 · 35236 Breidenbach · Germany
Fon: +49 6465 918-0 · Fax: +49 6465 918-1100

Weber Maschinenbau GmbH Neubrandenburg
Feldmark 11 · 17034 Neubrandenburg · Germany
Fon: +49 395 4506-0 · Fax: +49 395 4506-1110

info@weberweb.com · www.weberweb.com