

# 330 IK

Kolossal Gravity feed slicer Mod. 330, suitable for deli, vegetables, bread and cheese



Product certifications: 

Slicer with great capacity and cutting precision. It has a reduced loading height that notably reduces the operator strain. The machine can have plates differently equipped, like: plate with swinging transparent remnant holder (E option); plate with swinging aluminium remnant holder (EF option) or plate with self-locking clamping device, transparent and removable remnant holder and sliding plate (AB option). [Contact us for more information!](#)

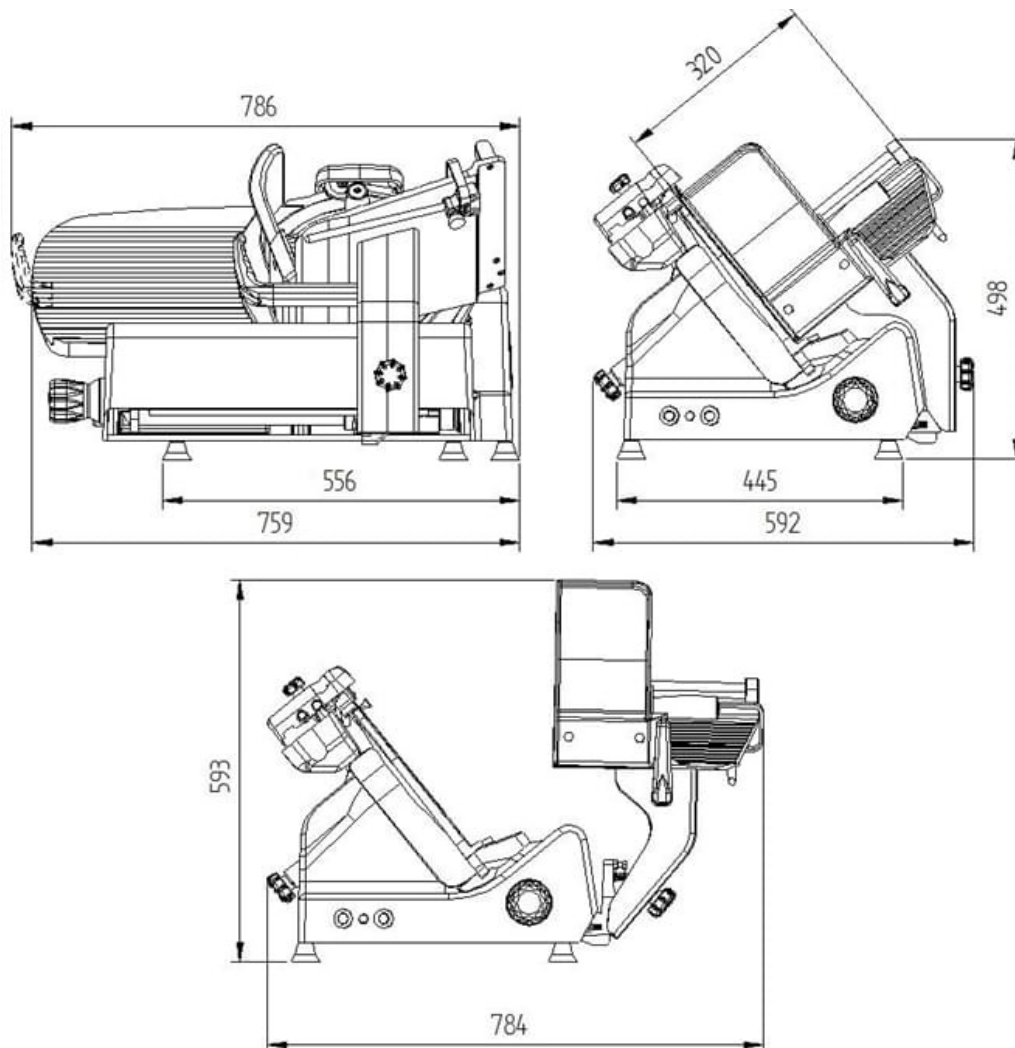
## Standard equipment

- Gear box transmission
- Great capacity and precision slicing
- Reduced counter space
- Built-in sharpener, right way available and easy to be used
- Low loading height, to reduce strain of the operator
- Ultra smooth, polished aluminum surfaces and careful slip grooves, to reduce friction and simplify cleaning
- Tilting away carriage; sharpener, blade guard, product deflector and sharpened remnant holder removable for a well done cleaning
- Adjustable food fence
- In compliance with European Norms: 2006/42/EC (machinery standards); 2006/95/EC (low voltage directive);

2004/108/EC (electromagnetic compatibility directive); 2011/65/UE (RoHS directive); 1935/2004/EC (food material directive) and their next updates. Follow also next harmonised standards: EN 1974:1988 + A1:2009 (slicing machines-safety and hygiene requirements); EN 60204-1 (safety of machinery); EN 55014 (electromagnetic compatibility); D.M. 21/03/73 (hygienic food tools requirements); 10/2011/UE (food grade plastic directive); and their next updates

## Caratteristiche tecniche - Kolossal 330 IK I - 330 IK E

Overall dimensions	759 x 592 x 784 mm
Installation area	556 x 445 mm
Working area	786 x 592 x 784 mm
Blade diameter	330 mm
Blade speed	200 rpm (50 hz)
Slice thickness	0 to 24 mm
Electrical protection	IPX3 (Motor IPX5)
Net weight	48 kg
Carriage travel	345 mm
Electrical specifications	220-230V / 360W a.c. monophase; 220-230V / 380-400V /280W a.c. threephase
Cutting capacity	Ø 240 mm - $\nabla$ 290 x 210 mm



\* Schema Tecnico Kolossal 330 IK I-E

Notice

x

This website or its third-party tools use cookies, which are necessary to its functioning and required to achieve the purposes illustrated in the cookie policy. If you want to know more or withdraw your consent to all or some of the cookies, please refer to the [cookie policy](#).  
By closing this banner, scrolling this page, clicking a link or continuing to browse otherwise, you agree to the use of cookies.